



# F5v



## POWERFUL PERFORMANCE FOR PRODUCTIVE MOBILE COMPUTING

Compact. Lightweight. Rugged. The Motion Computing® F5v brings mobile computing to a whole new level. Get the exceptional performance of an Intel® Core™ i7 vPro™ processor and the freedom to work anywhere.

At only **1.5kg<sup>1</sup>** the Motion® F5v makes it easy to bring technology into the field to streamline processes and increase productivity. Available with up to an Intel® Core™ i7 vPro™ processor, the F5v offers uncompromising levels of power, security and manageability. With extended battery life, a **hot-swap battery feature**, superior performance and advanced **remote management capabilities**, mobile workers are equipped with a robust computing tool for accomplishing virtually any task.

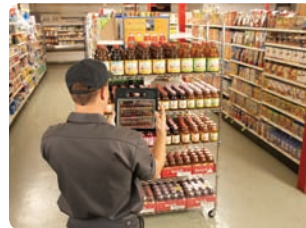
The rugged and portable Motion F5v helps make the most out of every site visit. Optional **capacitive dual-touch** input offers the convenience of touch navigation as well as the ability to capture digital signatures and navigate applications that require the accuracy of pen input. Integrated **Gobi™ connectivity** provides real-time access to forms and files anywhere. Track high-value assets, manage inventory and improve documentation accuracy with the optional **integrated digital camera, web camera, barcode scanner** or **RFID reader**.

### WORK-SITE TOUGH

Don't worry. The F5v brought its hard hat. Tested and proven to withstand field-ready conditions such as dust, heat and rain, the Motion F5v is ready to work wherever you're working. The strong internal magnesium frame and solid state drive (SSD) protect your data against drops and bumps. Fully-sealed, the F5v is protected against the elements and easily cleaned.



Take the F5v with you no matter where your work takes you.



Show proof of work with the integrated point-and-shoot camera.



Maintain inventory and track assets with the integrated barcode scanner.

The Motion F5v comes standard with **Corning® Gorilla® Glass**, offering advanced display protection, perfect for real-world mobile work environments. Add 180-degree viewing angles, **Hydis AFFS+ LED backlit display** and **View Anywhere® technology** for reduced reflectance and glare, and you get the best tablet PC viewing experience available for outdoor use.

Available with a variety of processor options and built to run **Windows® 7**, the F5v can manage virtually any business application and is as easy to integrate and support as any other device on your network. The Motion F5v is tough enough to withstand your work environment and powerful enough to get the job done.





# The F5v packs power and integrated features into a highly mobile, durable design.



## ACCESSORIES TO MEET MOBILITY NEEDS



### Docking Station

Use your F5-Series Tablet PC like a desktop with the full-featured, mountable, desktop docking station. Includes a battery charging bay for keeping multiple batteries charged and ready for deployment in the field.



### Battery Charger

The battery charger charges additional batteries, giving the capability of a full day of performance. The charger's LED indicates battery charge status.

\*Additional batteries sold separately



### EasyConnect

This lightweight add-on provides one USB 2.0 port and one Ethernet 10/100 port enabling added connectivity.



### ClipCarry

This ergonomic carrying solution, designed specifically with your F5-Series Tablet PC in mind, provides alternate methods for carrying and holding the device.



### Mobile Dock

Offering full port replication and charging capability, this powered dock is perfect for the mobile professional.

## KEY BENEFITS AND FEATURES

### LIGHTWEIGHT AND HIGHLY MOBILE

Only 1.5kg<sup>1</sup> (3.3lbs)  
Hot-swappable battery  
Built-in wireless connectivity

### INTEGRATED FEATURES

3.0-Megapixel camera  
Front-facing web camera  
RFID reader (MIFARE Classic)  
Barcode scanner

### POWERFUL YET EFFICIENT

Intel® Core™ i7 vPro™ Processor or  
Intel® Core™ i5 vPro™ Processor or  
Intel® Core™ i3 Processor  
Supports Windows® 7  
SSD up to 128GB  
RAM up to 4GB  
USB 2.0 port

### INDUSTRY-LEADING DISPLAY

Hydis AFFS+ LED backlit display  
View Anywhere® technology  
Corning® Gorilla® Glass durable display

### CAPACITIVE DUAL-TOUCH INPUT

Increased flexibility and ease of use  
Convenience of touch navigation  
Real-time capture of digital signatures  
Accuracy for navigating smaller targets

### RUGGED FROM THE INSIDE OUT

Internal magnesium frame  
Fully sealed and IP54-rated  
Meets MIL-STD-810G



**CORE i7 vPro**

**Protect. Manage.**

1 Represents approximate system weight measured with a 40Whr battery. Actual system weight may vary.